

CORNISH SHRIMPER KIT INSTRUCTIONSGENERAL

Set boat up level and support under keel and bilge runners, or leave on trailer and adjust to level, chock as necessary.

Check all parts against drawing and try in place. Trim if necessary, mark and drill fixing holes if possible at this stage then sand all parts well and prepare for varnish, paint or oiled finish as desired, joining any parts required to be glued together, prior to painting etc.

PAINTING AND VARNISHING

Before fixing any components the interior of the cabin should be painted out (areas not pre-finished) and we recommend cleaning all sharp edges with a fine file or emery cloth, taking care not to scratch gelcoat. Apply three coats of oil bound eggshell paint, cream or colour to choice.

Interior wooden parts can all be treated before fixing as this makes a much simpler job and ensures edges and backs are all coated. We recommend 3 or 4 coats of polyurethane varnish, matt or gloss.

Exterior hull woodwork if in teak can either be left to bleach naturally or can be oiled with teak oil. Iroko should really be varnished with 4 coats of one or two-can polyurethane but there are other finishes available such as Deks ojle, should the Owner desire. Again, all woodwork should be varnished or treated prior to fixing but after drilling fixing holes and counter sinking etc. All paints and varnishes should be applied in accordance with the paint manufacturer's instructions.

FASTENINGS

The fastenings supplied are either stainless or "sheradised" steel or brass and all screws should have holes counter bored first, particularly into GRP. Silicone sealant should be used under the heads of all screws and bolts fastening fittings to the hull etc., and also a smear on the bearing face of the fitting is a good idea.

## C O R N I S H   S H R I M P E R

NOTE: (K) numbers refer to fastenings list

HULL INTERIOR ASSEMBLY - DRAWING C.S.1.

## 1.    TABERNACLE SUPPORT POST

This will already be in position on the 'Stripped Interior Version'. Fit collar and glue to top of post, place in position and screw post to galley upstand and screw collar to cabin top with fastenings (K18).

## 2. and 3.    FORWARD BULKHEAD AND GRP BIN

Fasten GRP bin to back of forward bulkhead with (K9) sliding ply division in place first, then position bulkhead and fasten with (K10) and at the top centre with the ends of the same bolts that hold the samson post.

NOTE: Check polystyrene buoyancy is taped in position before fitting bulkhead.

## 4.    CABIN PART BULKHEADS

Secure these two pieces in place using fastenings (K37) that hold the halyard horn cleats in position.

## 5.    CABIN STEP UNIT

Drill holes in position marked and bolt step unit to main bulkhead with (K14) and remember that step unit should be easily removable for access to centreplate mechanism. Drill and secure brass wearing strip to top flange of step part covering joint with (K15).

NOTE: Check if packing piece is required where step rests on top of centreplate case.

## 6.    BUNK EDGING STRIPS

Fasten edging strips in position with 1" above bunk tops with (K16).

## 7.    GALLEY AND CHART TOP

Screw and glue support pieces to underside of galley section with (K7). Position galley and chart tops screwing galley top only with 4 no. screws (panhead) then fit fiddle strip along edge with (K8). Position cooker alongside bucket recess and fix with (K43).

## 8.    CABIN SLATTED SIDE PANELLING AND PORT HOLES

Position and screw slats to cabin sides by screwing back to strips already fitted to hull with (K6). Slats should have approximately 3/4" spaces, but it is best to mark out carefully first. Position port holes in openings and secure with fastenings supplied (K27) bedded in sealant.

## 9.    BUNK END PIECES AND LOCKER TOPS

Position in recesses and kedges provided and leave loose.

## 10.    FLOOR BOARDS

Position on supports provided and fix down with 6 brass turn buttons rubber bushes and 1/2"x8 panhead screws

## 11.    CABIN GRAB HANDLES ETC.

Position where indicated and fix with (K11) to GRP flanges and cover remaining flange with grey P.V.C. clip on cover strip.

Revised  
June 1981

HULL EXTERIOR ASSEMBLY - DRAWING C.S.2.

## 13. BILGE PUMP

Position in opening provided and secure with (K28). Fit gun metal skin fittings to hull and cockpit well where marked with plenty of sealant and cut as required taking (K48), using sealant on threaded skin fittings and secure with jubilee clips (K51).

## 14. SHROUD PLATES

Fit in recesses provided on bear tape with (K24); bottom of plates level with bottom edge of top plank. Shroud plates to be vertical from waterline.

## 15. GUNWALES

Trim bow end first and screw back on bear tape with (K1). Screws should be staggered up and down and at approx. 6" centres, use 2 screws one above the other at all gunwale ends (note gap) for shroud plates.

## 16. SAMSON POST

Fit brass rod to samson post and fit post to deck upstand on bear tape using (K5). Check carefully for upright and centre line as this affects bowsprit.

## 17. HALLIARD CLAM CLEATS

Fit clam cleats for halliards and roller reefing control line in positions indicated with (K30, K31 and K32).

## 18. HALLIARD HORN CLEATS

Fix horn cleats as shown to aft cabin upstands and slant cleats as washboard frame. Fasten with (K37). Combine with item 4.

## 19. MAST TABERNACLE

Fix in position on centre line as shown with (K23).

## 20. VENTILIGHT

Secure ventilight in position on pre-formed hole with fittings provided (K47).

## 21. STEMHEAD FITTING

Fit in position using bear tape if necessary with (K22).

## 22. OUTBOARD MOTOR MOUNT

Fit angle pieces to wooden pad with the larger bolts and bolt into motor well in holes provided with the extra hole used for adjusting angle to suit motor (K20).

Fit GRP baffle in position as indicated with (K21) - bottom edge tucked into bottom aft corner of motor well.

## 23. MAINSHEET HORSE

Fit bear tape to inside of angle brackets and slide horse back towards stern until tight and secure with (K25).

## 24. RUDDER, TILLER AND PINTLES ETC.

Secure pintles to rudder and hull and tiller hood to top of rudder with (K26). Position pintles on hull first (top hull pintle to have two screws and two bolts) and fit bottom pintle to rudder, inserting

pivoting plate and pivot bolt through centre hole tie on uphaul line through plate hole, and lead up rudder stock in recess to one bullseye fairlead at the top of the stock and a second one on tiller 2 of (K29). Check tiller for fit in hood before finally fixing hood after rudder is hanging, and fix small cleat to tiller for uphaul line. Fix tiller extension and clip (K45 and K46) in position on tiller, leaving enough tiller, say 6", for hand grip.

#### 25 JIB SHEET CLEATS

Fix in positions shown with (K41).

#### 26. COCKPIT STEP

Fit wooden step in place and secure with (K12) through ends.

#### 27. HATCH RUNNERS AND WASHBOARD FRAME

Fit in position hatch runners and cross pieces (inside edges flush with GRP upstands) and secure with (K2). Keep ends of runners flush with aft cabin upstands to abutt washboard frame, fitted in position with (K3), with the two longer screws used to hold the top screwed from outside, other screws from inside.

#### 28. JIB FAIRLEAD AND ADJUSTABLE TRACK

Secure in position indicated with (K40).

#### 29. FAIRLEADS

Fix in positions indicated on bear tape bow and stern fairleads with (K34 and K35).

#### 30. EYES FOR TILLER LASHING

Fix in position indicated with (K52).

#### 31. FAIRLEAD EYES FOR REEFING LINE

Position fairlead eyes, 2 of (K29), one on samson post and the other on cabin top to lead reefing drum line from bowsprit to clam cleat position, to avoid line fouling hatch etc.

#### 32. HALLIARD CHEEK BLOCKS

Fit cheek blocks in positions shown to cabin top upstands, two starboard and one port, to lead halliards aft with (K33).

#### 33. COCKPIT LOCKER LIDS

Cut and fit rubber sealing strip to recess in underside of lids with EVO STICK impact adhesive or similar, and secure 2 No. fasteners to and 2 hinges to large lid and two fasteners to the small lid with (K36). Trim off excess thread as required to fasteners.

#### 34. WASHBOARD

Position 2 piece perspex and wood washboard in frame and fit stops, 2 of (K50) with (K17) where shown to keep top of board level with top of hatch runners, fit cover strip to perspex section to weather proof joint with 5 No. 3/4"x6 panhead.

#### 35. HATCH

Fit 4 nylon sliders to underside of hatch (K42) and fix aluminium angle to forward edge. Check for fit under cross rail then position and drill for nylon hatch retainers, 2 either side (K50) all screwed with (K4). Position and fit hatch wooden upstand strip to aft edge with (K19) and

fix hatch side cover strips in place with 5/8"x8" c.s. 6 No. per side. Finally, fix in position hasp and staple with (K49) fixed to starboard edge of hatch and washboard frame.

NOTE: Aft edge of hatch should be flush with face of washboard frame.

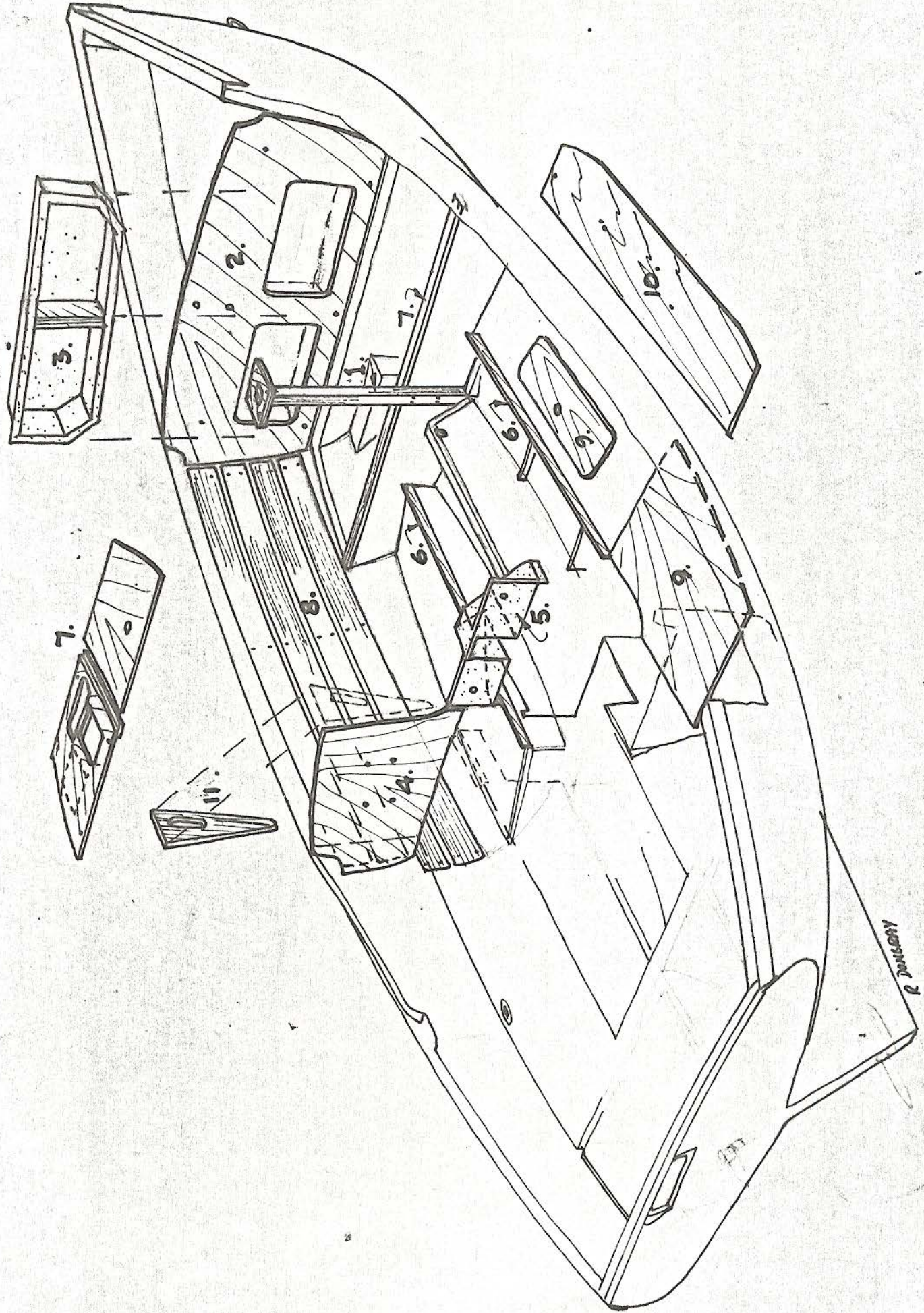
36. COCKPIT SOLE

Fasten slats together 1/2" apart with (K21a) and glue on cross braces at ends, with thicker brace in centre.

## CORNISH SHRIMPERS

SPARS AND FITTINGS - DRAWING C.S.3.

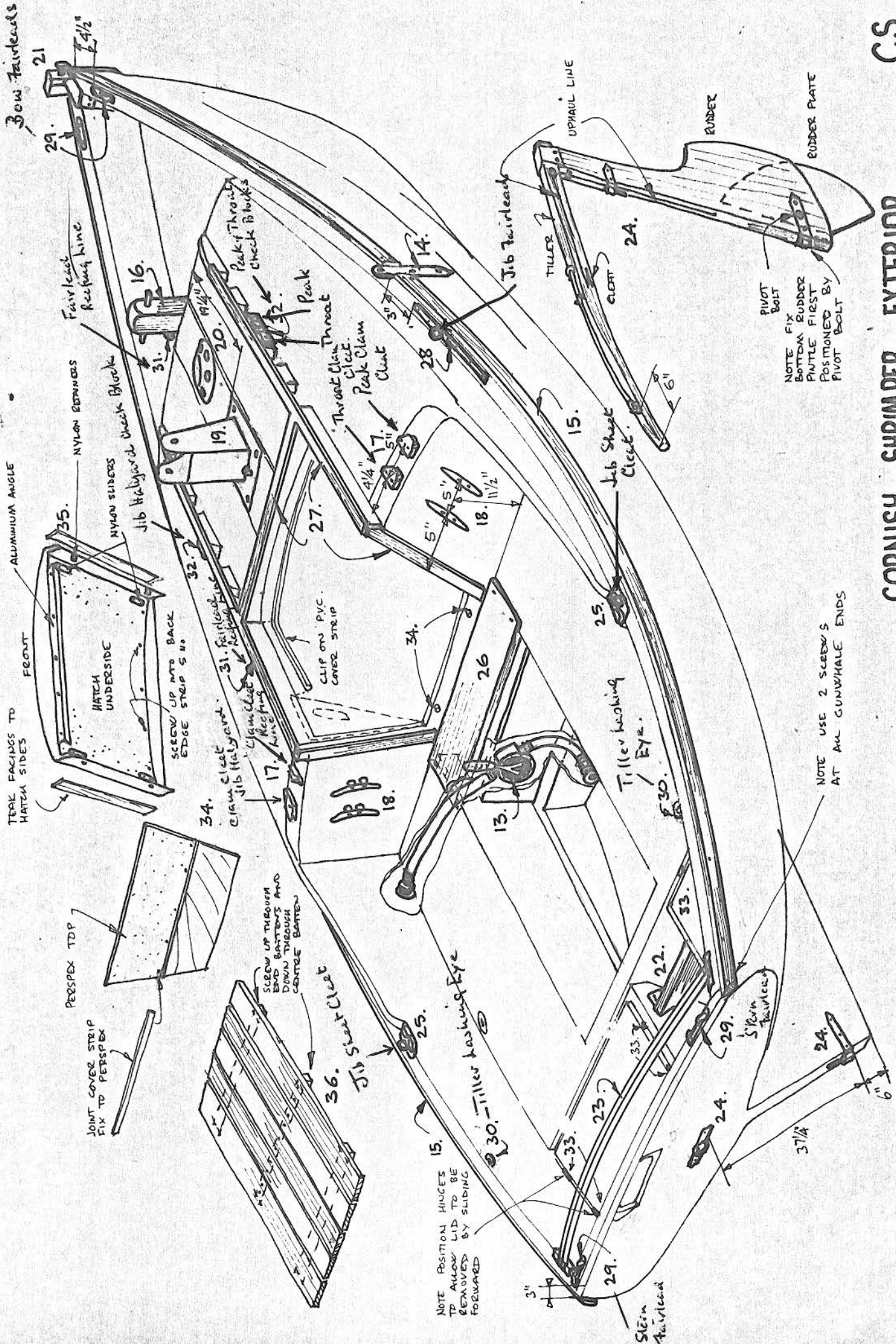
37. Complete varnishing spars with a further 3 coats of one or two-can polyurethane before fixing fittings, but drill any through holes first.
38. Generally position all fittings as shown on drawing and secure with screws supplied, ready taped to fittings.
39. Refer to rigging notes for remainder of work involving spars.



CS 1.

CORNISH SHRIMPER INTERIOR

J. J. J. J.



Bow Fairleads

ALUMINIUM ANGLE

TEAR FACINGS TO HATCH SIDES

FEAST

PRESPLEX TOP

JOINT COVER STRIP FIX TO PRESPLEX

HATCH UNDERSIDE

SCREW UP INTO BACK EDGE STRIP 5 H.

SCREW UP THROUGH END BATTENS AND DOWN THROUGH CENTRE BATTEN

CLIP START CLEAT

NOTE POSITION HUGES TO ALLOW LID TO BE REMOVED BY SLIDING FORWARD

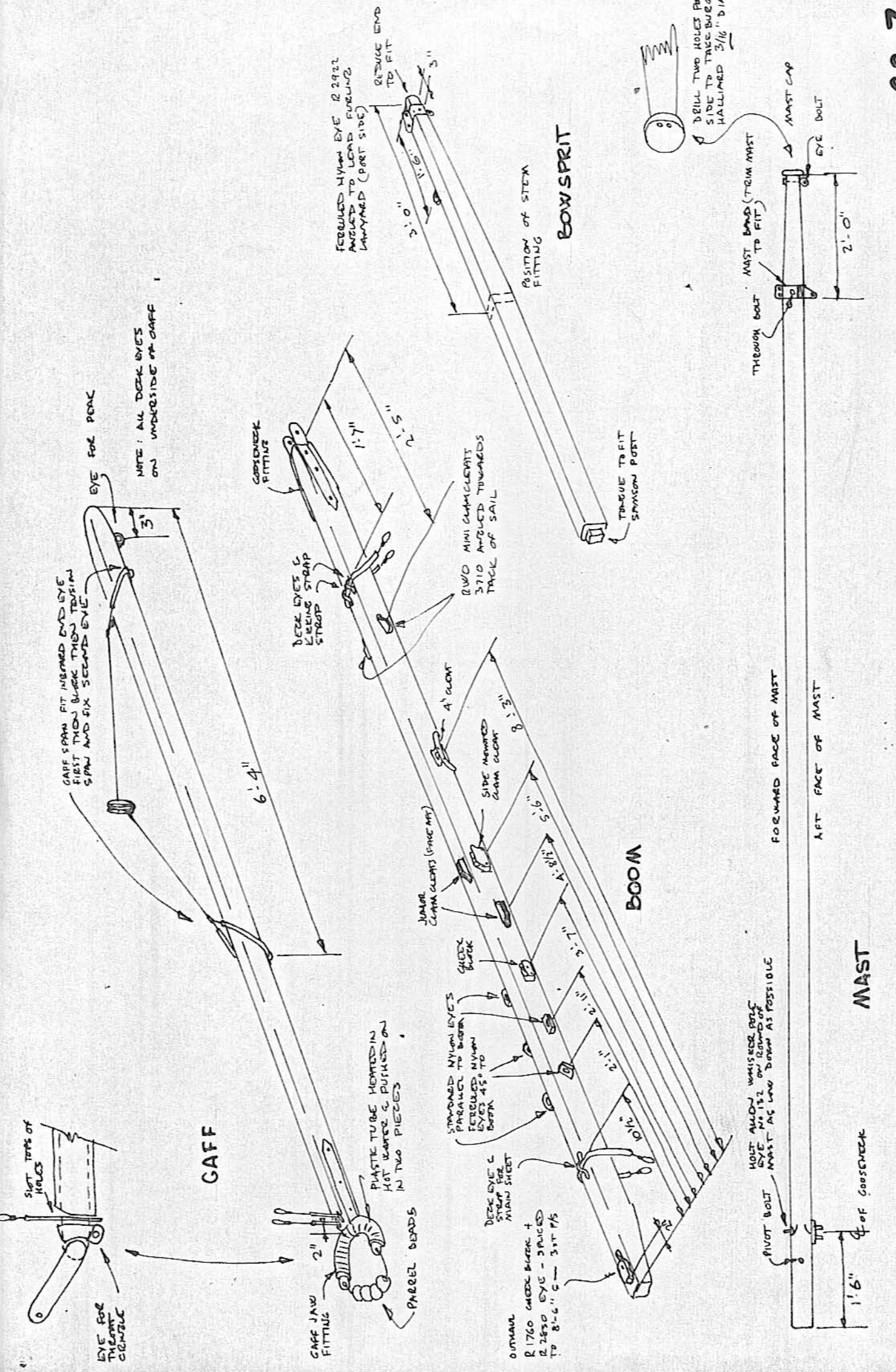
NOTE USE 2 SCREWS AT ALL GUNWHALE ENDS

NOTE FIX BOTTOM RUBBER PIVOT FIRST POSITIONED BY PIVOT BOLT

CORNISH SHRIMPERS EXTERIOR



CORNISH SHRIMPER SPARS



MAST

BOOM

BOW SPRIT

GAFF

KIT NO.	ITEM	FASTENINGS	QUANTITY
K1	Fixing gunwales	1 1/4" X 8 pn/hd	84
K2	Hatch Runners	1 1/2" X 8 csk	16
K3	Sliding washboard frame	1" X 8 csk	8
		2" X 8 phsc	2
K4	Sliding Hatch	M6 X 20 pn/hd M. screws	4
		1/2" X 8 pn/hd	5
K5	Samson Post	M10 X 120 Hex hd nuts, bolts & washers	2
K6	Side Panels	1 X 8 rhcs + cupwashers	48
K7	Galley Tops	1 X 8 csk	10
		1" X 8 rhcs with cupwashers	4
K8	Galley Fiddle	1 1/4" X 8 csk	10
K9	GRP Bin	1/2" X 8 pn/hd	8
K10	Forward Bulkhead	1" X 8 rhcs with cupwashers	5
K11	Grab Handles	1 1/4" X 8 csk	10
K12	Wooden Cockpit Step	1 1/2" X 10 csk or M5 X 35 csk + locknuts	4
K13	Floorboards	1 1/4" X 8 csk	6
K14	Glass Step Unit	M8 X 50 Hex hd nuts, bolts & washers	2
K15	Brass Strip	3/4" X 6 csk	6
K16	Ply Bunk Strips	1/2" X 8 pn/hd	20
K17	Washboard Stops	3/4" X 8 pn/hd	2
K18	Tabernacle Support Post	2" X 8 rhcs	4
		3/4" X 6 csk	4
K19	Hatch Fiddle	1" X 8 csk	5
K20	Outboard Bracket	M8 X 60 Hex hd nuts, bolts & washers	4
		M8 X 40 " " " " " "	4
K21	Outboard Well Baffle	1/2" X 8 pn/hd	5
K21a	Cockpit Floor	1 1/4" X 10 csk	30
K22	Stem Head	1" X 10 csk M6 X 40	6
K23	Tabernacle	M10 X 40 Hex hd nuts & bolts	4
K24	Shroud Plates	M10 X 30 Hex hd nuts & bolts	4
K25	Mainsheet Horse	1 1/4" X 10 csk	8
K26	Rudder Pintles, Hood and Plate	1" X 10 csk	18
		M10 X 65 Hex hd nut & bolt	1
		1 1/4" X 10 csk	4
		M6 X 50 + nuts & washers	2
K27	2 3 1/2 Glass Alloy Portlights	M5 X 30 pn/hd + nuts	12
K28	1 Henderson Bilge Pump	M5 X 30 pn/hd + nuts	8
K29	4 R293B Bullseye Fairleads	3/4" X 6 csk	8
K30	1 R371 Clam Cleat	3/4" X 8 csk	2

KIT NO.	ITEM	FASTENINGS	QUANTITY
K31	2 X R380 Clam Cleats	1 1/4" X 10 csk	4
K32	1 X R381 Clam Cleat	1 1/4" X 10 csk	2
K33	3 X Barton CH92 Cheek Blocks	3/4" X 8 pn/hd	12
K34	1 Pair 4" Galvanised Handed Fairleads	1 1/4" X 8 csk	6
K35	2 X 4" Galvanised Straight Fairleads	1 1/4" X 8 csk	6
K36	4 X C/Plated Hatch Fasteners & 2 hinges	1/2" X 6 csk 16 off      1/2"x8 p/h 8 off	
K37	4 X R395B Nylon Horn Cleats	M6 X 50 csk + nuts & washers	8
	Brass Turn Buttons 6 off	Rubber spacers 6 off	1 1/2"x8 p/h 6 off
K39	1 X R202B Inspection Hatch	1/2" X 6 csk	12
K40	2 X Barton 332 Jib Fairlead & Track	1 1/4" X 10 csk 1 1/4" X 10 pn/hd	6 4
K41	2 X Barton 531 Jib Sheet Cleats	2 X 10 csk 1 X 8 csk	4 4
K42	4 X R289 Plastic Toe Strap Plates	1/2" X 6 csk	8
K43	1 X Niobe Cooker	M5 X 20 pn/hd + nuts	4
K44	2 X 3/4" G/Metal Skin Fittings		
K45	1 X R88A Tiller Extension	3/4" X 8 pn/hd	2
K46	1 X HA454 Tiller Ext. Retaining Clip	3/4" X 6 csk	2
K47	1 X Deluxe Ventilight		
K48	1 length Quinflex Hose		
K49	1 X Brass Hasp & Staple	3/4" X 6 csk 1/2" X 6 csk	3 2
K50	6 X Nylon Spacers	M6 X 20 pn/hd 3/4" X 8 pn/hd	4 2
K51	4 X Jubilee Clips		
K52	1 Set R293 Tiller Lashings	3/4" X 6 csk	4

Revised June 1981